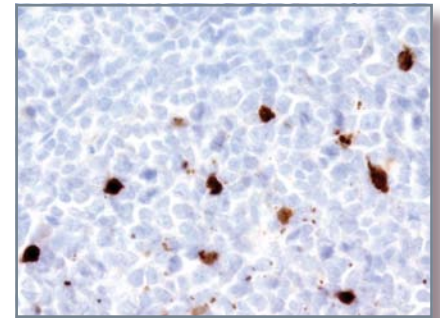
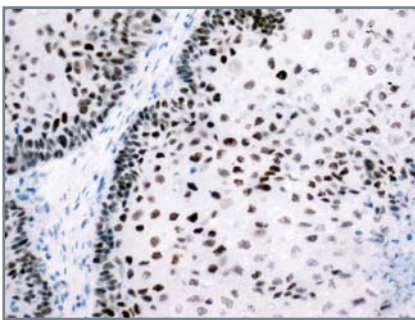


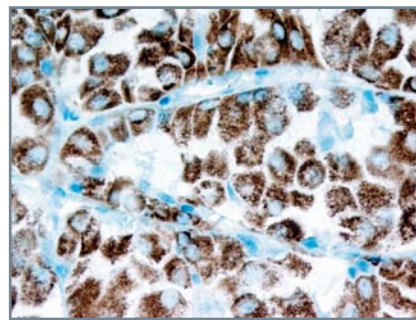
It is generally impractical for laboratories to maintain among their IHC test menu antibodies that are infrequently employed, e.g., antibodies to rare tumors. You can always turn to PhenoPath Laboratories, as our test menu includes not only these esoteric antibodies, but many novel markers which your laboratory may not have validated or brought online. Thus, PhenoPath Laboratories can complement and complete IHC studies performed in your own laboratory, while offering timely response to any questions you might have about some of these markers. A gallery highlighting some representative 'esoteric antibodies' is presented on this page.



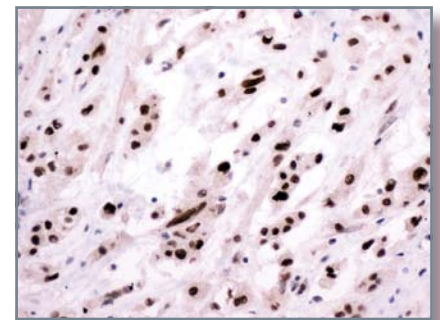
Caspase 3 Fragment
(high-grade carcinoma)



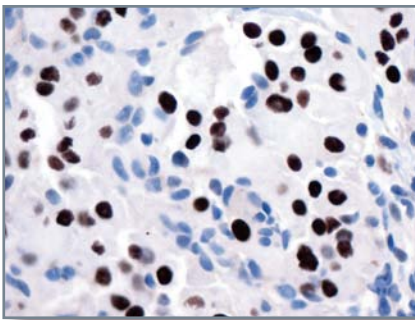
NUT
(NUT carcinoma)



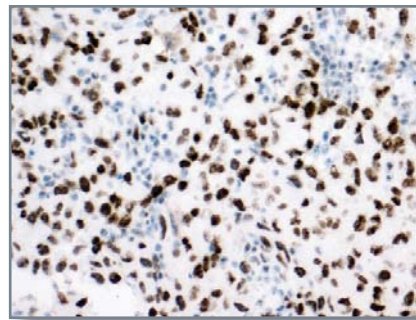
Mitochondria
(oncocytoma)



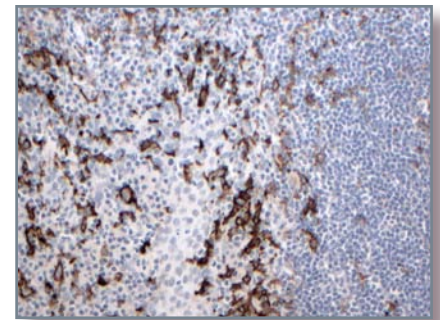
Brachyury
(chordoma)



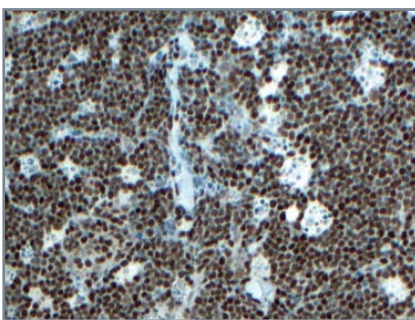
TFE3
(translocation renal cell carcinoma)



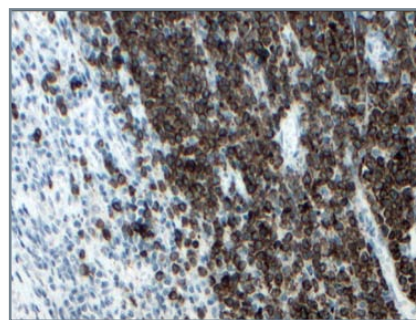
FLI-1
(epithelioid angiosarcoma)



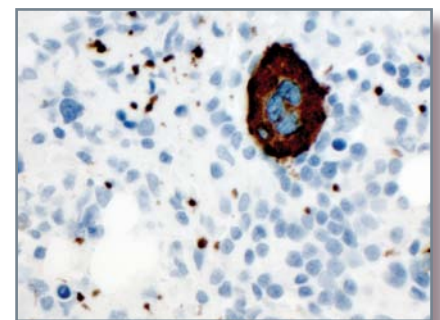
CD14
(normal lymph node)



c-MYC
(aggressive B cell lymphoma with a high likelihood of a c-MYC translocation)



TCR γ 3.20
(benign and neoplastic gamma-delta T cells)



CD61
(highly sensitive and specific for megakaryocytes and platelets)