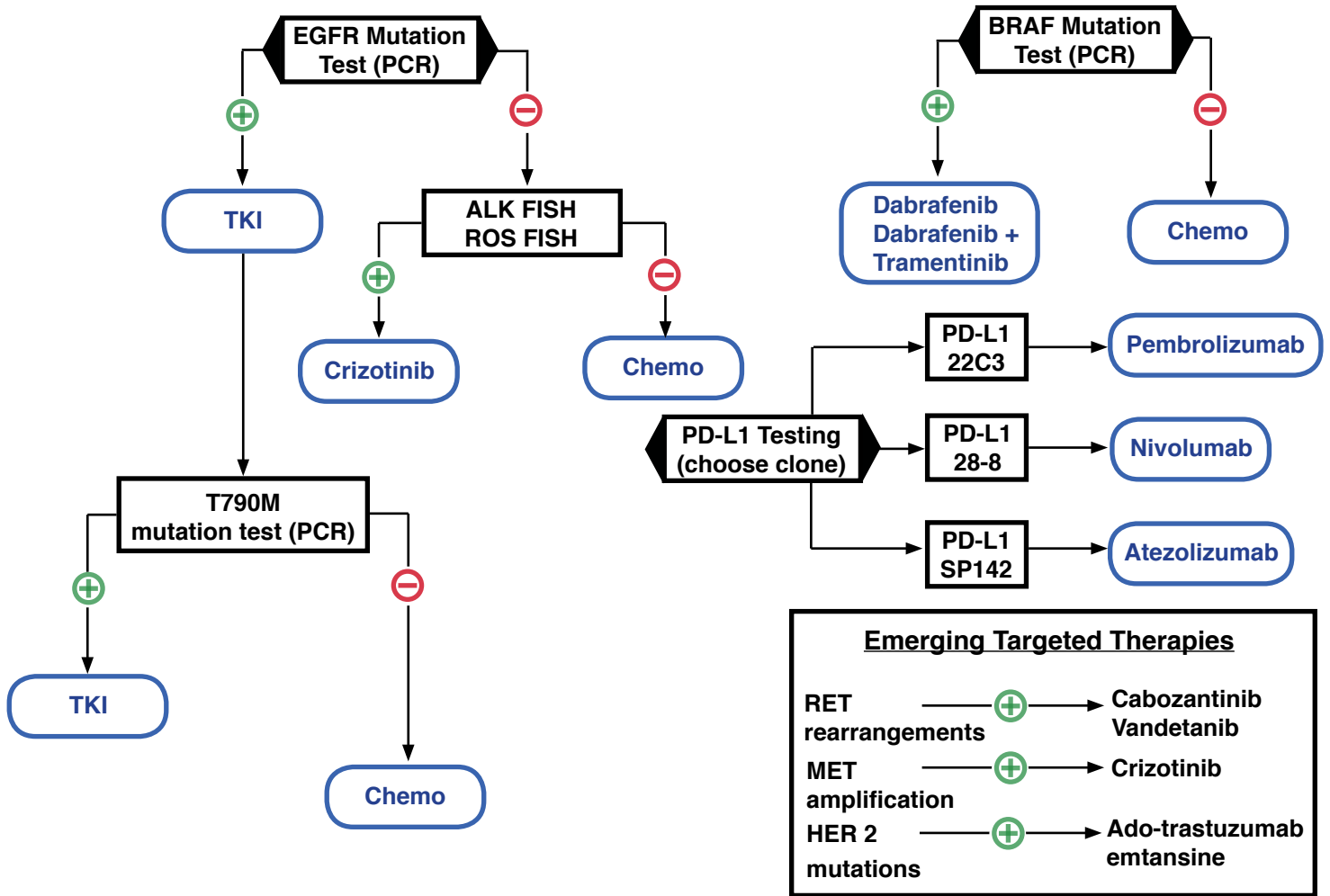


LUNG NSCLC

RECOMMENDED MOLECULAR TESTING



	Test/CPT	Turnaround Time	Specimen Requirements
FISH	ALK 88374	M-F 3-4 days TAT	<ul style="list-style-type: none"> Formalin-fixed, paraffin-embedded tissue block or cell block - OR Minimum of 5 unstained slide cut at 4µm for each test requested
	ROS 88374	M-F 3-4 days TAT	
	MET 88374	M-F 3-4 days TAT	
	RET 88374	M-F 3-4 days TAT	
IHC	PD-L1 22C3 88360	M-F 1-2 days TAT	<ul style="list-style-type: none"> Formalin-fixed, paraffin-embedded (FFPE) tissue block or cell block - OR - 2 unstained slide for each test requested plus 3-4 additional unstained slides cut at 4 µm
	PD-L1 28-8 88360	M-F 1-2 days TAT	
	PD-L1 SP142 88360	M-F 1-2 days TAT	
	ROS-1 88342 or 88341	M-F 1-2 days TAT	<ul style="list-style-type: none"> Formalin-fixed, paraffin-embedded (FFPE) tissue block or cell block - OR - 1 unstained slide for each test requested plus 3-4 additional unstained slides cut at 4 µm
	ALK 88342 or 88341	M-F 1-2 days TAT	
PCR	EGFR 81235 88381 may apply	T-F 3-5 days TAT	<ul style="list-style-type: none"> Formalin-fixed, paraffin-embedded (FFPE) tissue block (preferred) or unstained slides (10 slides are usually sufficient)
	EGFR (cell-free DNA) 81235	T-F 3-5 days TAT	<ul style="list-style-type: none"> Minimum of 2 mL of plasma (following collection instructions) Recommend 4-6 mL of plasma for testing
	BRAF V600 81210 88381 may apply	T-F 3-6 days TAT	<ul style="list-style-type: none"> Formalin-fixed, paraffin-embedded (FFPE) tissue block (preferred) or unstained slides (10 slides are usually sufficient)